

RED INDUSTRIAL SOCKET INSTALLATION FOR TESLA MOBILE CONNECTOR



Summary sheet

Model S includes a 6 metre Mobile Connector cable for home charging. The red adapter is included as standard equipment in The Netherlands, Belgium, Luxembourg, Germany, Switzerland, Austria, Sweden, Denmark, Finland, Italy and Eastern Europe.

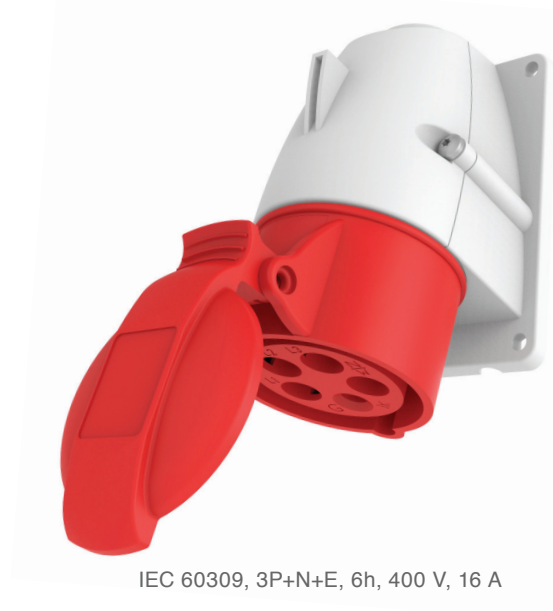
To take full advantage of your Mobile Connector, work with an electrician to install a red socket where you plan to park your Tesla. This summary sheet will provide all the necessary information for an electrician to install the red socket.

Socket Installation Details

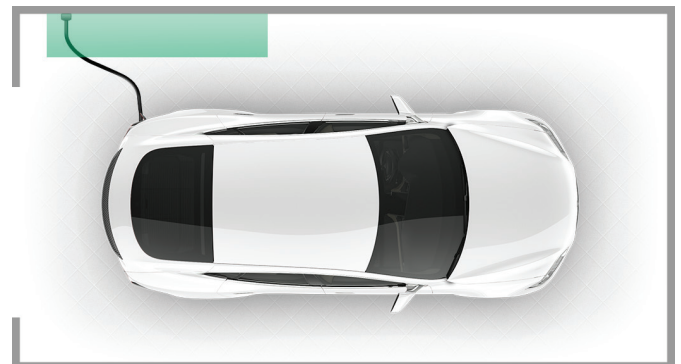
- **Socket:** Red 5-Pin IEC 60309, 3P+N+E, 6h
- **Voltage:** 3 phase, 230/400 VAC supply, 50 Hz
- **Current:** 16 A
- **Power provided:** 11 kW
- **Potential L1 – N:** > 200 V
- **Impedance:** Less than 12% voltage drop from zero to max charging current
- **Breaker:** Installation on a separate group rated for 16 A
- **Wiring:** Minimum conductor cross section area 2.5 mm², or higher depending on installation specifics and local regulations
- **Receptacle:** Downward angle socket recommended
- **Location:** Install less than 4.5 metres from left rear light position and at least 65 centimetres above ground

Mobile Connector Compliance

- **Enclosure Protective Rating:** Type 3R and IP44
- Do not use extension cords or non-Tesla approved adapters



IEC 60309, 3P+N+E, 6h, 400 V, 16 A



Install socket near left rear light cluster



Questions?

Contact the Tesla Technical Support Team:
ChargingInstallation-EU@teslamotors.com | Tel: +31 (0)13 799 9537