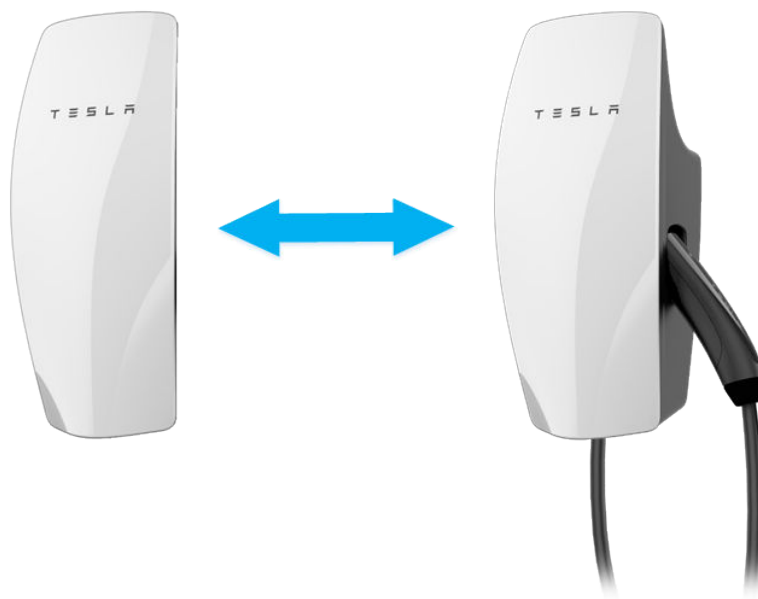




TESLA



## Replacing Faceplate of Gen 3 Wall Connector

[tesla.com/wallconnector](https://tesla.com/wallconnector)



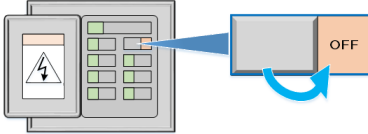
# REMOVING FACEPLATE

Tools and Equipment:

- T10 Torx bit

**WARNING:** Do not service the Wall Connector while it is energized. Turn off power to the Wall Connector at the upstream circuit breaker prior to servicing.

1. **TURN OFF POWER TO THE WALL CONNECTOR AT THE CIRCUIT BREAKER.** Wait 5 minutes for the Wall Connector to completely de-energize.



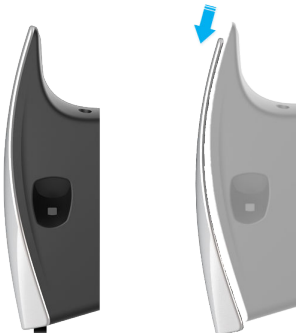
2. Remove the main unit from the wirebox.



3. Use a T10 Torx bit to remove the 2 screws securing the faceplate to the main unit.



4. Push the faceplate slightly downward to release it from the 2 sliding tabs at the top of the main unit. Remove the faceplate.

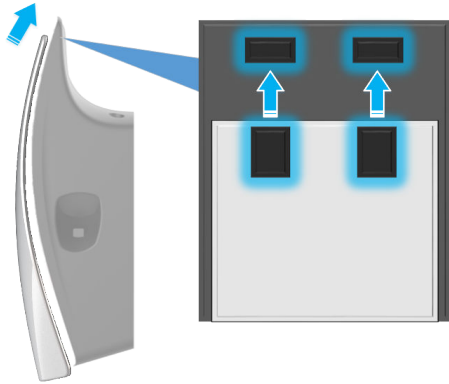




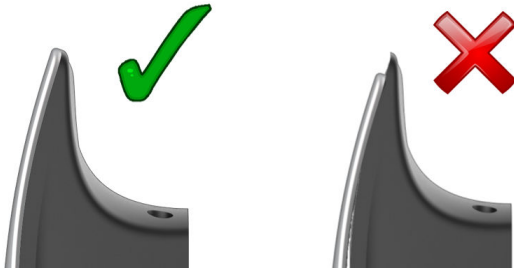
## Tools and Equipment:

- T10 Torx bit

1. Position the faceplate on top of the main unit so the 2 screw pegs at the bottom of the faceplate touch the bottom edge of the main unit.
2. Center the top of the faceplate in the main unit so the 2 tabs at the top of the faceplate align with the 2 tabs at the top of the main unit.
3. With the 2 sliding tabs aligned, push the faceplate upward until the 2 tabs securely connect.



4. Verify that the faceplate is seated securely and sits slightly higher than the main unit at the top.



5. Secure the faceplate to the main unit with 2 screws using a T10 Torx bit. Hand-tighten the screws.

